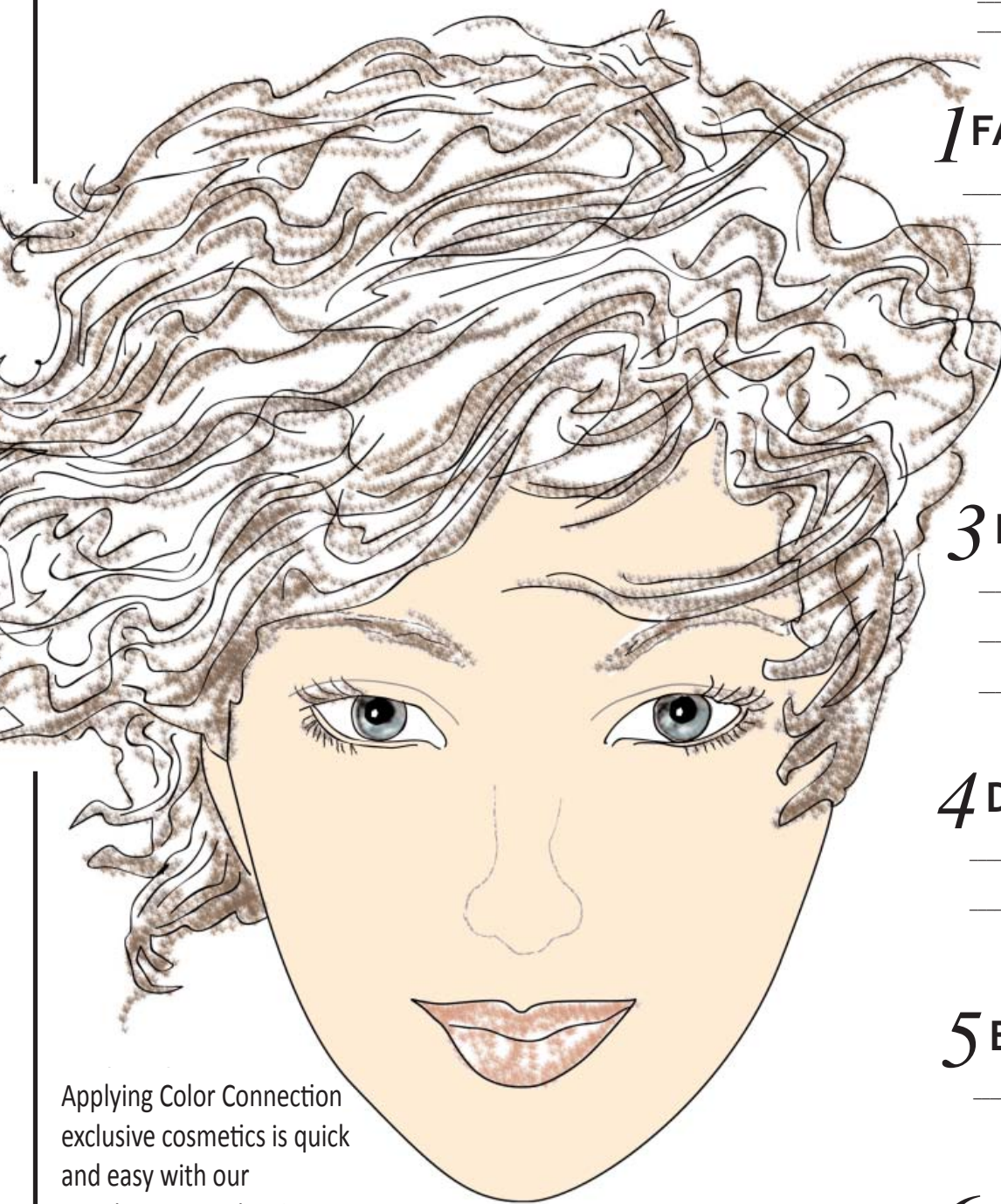


# 7 STEPS - 7 MINUTES

FACE DESIGN FOR:

IMAGE DESIGNER:



## 1 FACE IT!

FOUNDATION

FINISHING  
POWDER

## 2 ACCENT IT!

BLUSH

## 3 EYE IT!

EYESHADOW

EYESHADOW

EYESHADOW

## 4 DEFINE IT!

EYE LINER

MASCARA

## 5 ENHANCE IT!

BROW COLOR

## 6 LINE IT!

LIP LINER

## 7 COLOR IT!

LIPSTICK

HIGH IMPACT  
LIPSTICK

Applying Color Connection  
exclusive cosmetics is quick  
and easy with our  
step-by-step application.

